

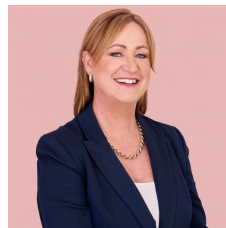


297 Bruxner Park Road Korora NSW

If your looking for your dream parcel of land to build your forever home on or the possibility to subdivide then look no further....this 2 hectare (almost five acres) is the perfect place to start in the highly sought after suburb Korora. From the moment you pull up the view will take your breath away, with views out to both the South Solitary Island and Lighthouse Island and along the coastline for your family and guests to enjoy.

The hard work and expense has been done, with a substantial concrete driveway being installed that leads to your level building pad, power has been put in place, all RFS fire regulations have been met and there is a 20,000-water tank that has been provided to service the home....so simply design your residence and start building

Type : Land
Price : Price Guide \$1,050,000
Land Size : 1.754 ha
View : <https://www.aletacorealty.com/sale/nsw/mid-north-coast/korora/residential/land/8138960>



Aleta Stephens
(02) 6638 9311



Whitney Stephens
(02) 6638 9311

[For full version visit the website](https://www.aletacorealty.com)