

2/6 Toormina Place Coffs Harbour NSW

2  1  1 

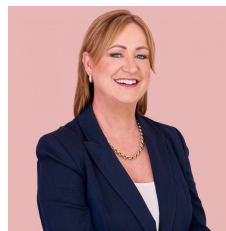
When a convenient location matters than this neat and tidy two-bedroom unit will appeal. It is within walking distance to the CBD with an abundance of shopping options, CEX club for an afternoon of bowls, local restaurants, both Anglican and Catholic churches and a popular primary school.

The same tenant occupied the property for the past twenty years and has only just moved out, it has been looked after very well and would be a great addition to your portfolio as the longevity of this tenant highlights that this is a great place to live.

Fitted with a new kitchen a few years back that is white with a grey bench top, hardwood flooring throughout, a north aspect ensuring the unit is light filled and a pleasure to

[For full version visit the website](https://www.aletacorealty.com/sale/nsw/mid-north-coast/coffs-harbour/residential/unit/8116132)

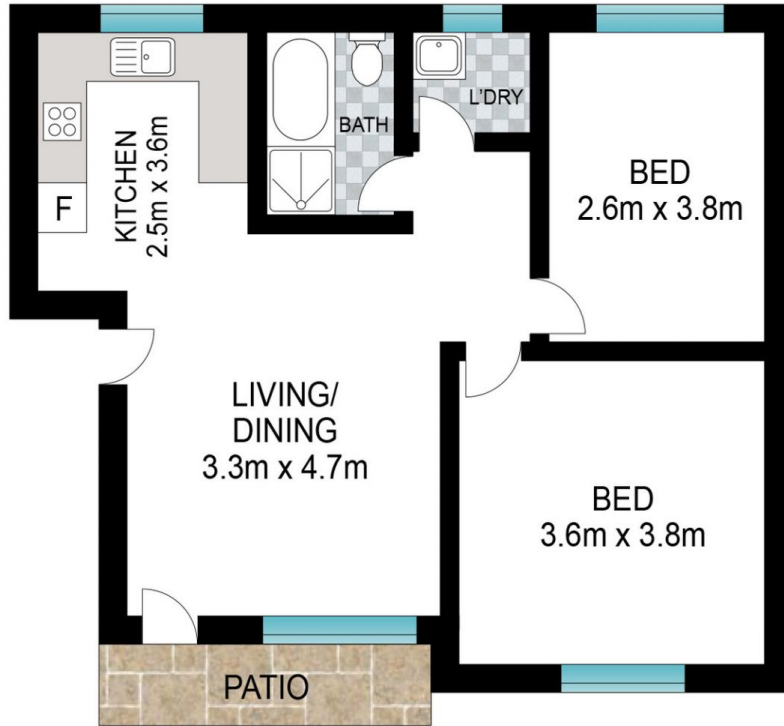
Type : Unit
Price : \$385,000 - \$400,000
Land Size : 79 sqm
View : <https://www.aletacorealty.com/sale/nsw/mid-north-coast/coffs-harbour/residential/unit/8116132>



Aleta Stephens
(02) 6638 9311



Whitney Stephens
(02) 6638 9311



Scale in metres. Indicative only. Dimensions are approximate. All information contained herein is gathered from sources we believe to be reliable. However, we cannot guarantee its accuracy and interested persons should rely on their own enquiries.

INT: 60 m²
EXT: 4 m²

2/6 Toormina Place, Coffs Harbour

