






## 26 Hives Close North Boambee Valley NSW

5  3  4 

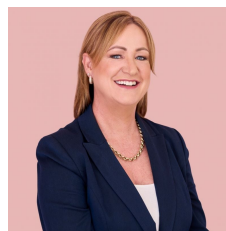
From the moment you pull up this home has a lovely street presence, is surrounded by quality homes in a quiet cul-de-sac.

Recently renovated this home offers five huge bedrooms, the master with large walk-in robe and lovely ensuite. The master also leads out on to the balcony that overlooks the treed koala reserve to the rear.

All areas of this home are very generous, the main lounge opens to the front balcony, the family room to the back balcony and the huge rumpus leads out onto the massive deck to the rear of the home....family gatherings here will be a must.

[For full version visit the website](https://www.aletacorealty.com)

**Type** : House  
**Price** : Price Guide - \$1,125,000  
**Building Size** : 266 sqm  
**Land Size** : 894 sqm  
**View** : <https://www.aletacorealty.com/sale/nsw/mid-north-coast/north-boambee-valley/residential/house/8103278>



**Aleta Stephens**  
 (02) 6628 0314



**Whitney Stephens**  
 (02) 6628 0314