



54 Bower Crescent Toormina NSW

3  1  1 

Than this neat and tidy three bedroom home will not dissappoint...located in a quiet, family friendly neighbourhood not far from Sunny Sawtell, major shopping centre and schooling. Positioned on a level allotment with a large garden shed and featuring raised veggie garden beds and easy care gardens and lawns.

Type : House
Land Size : 640.9 sqm
View : <https://www.aletacorealty.com/lease/nsw/mid-north-coast/toormina/residential/house/8020946>

Freshly painted throughout with new carpet and practice in design. The living, dining and kitchen is open plan but a great size with the dining area leading out to a large covered deck that overlooks the big fully fenced yard.

The kitchen is u-shaped with shelving for extra storage, it overlooks the kids playing out in the yard and out to the deck to chat to guests whilst your entertaining.

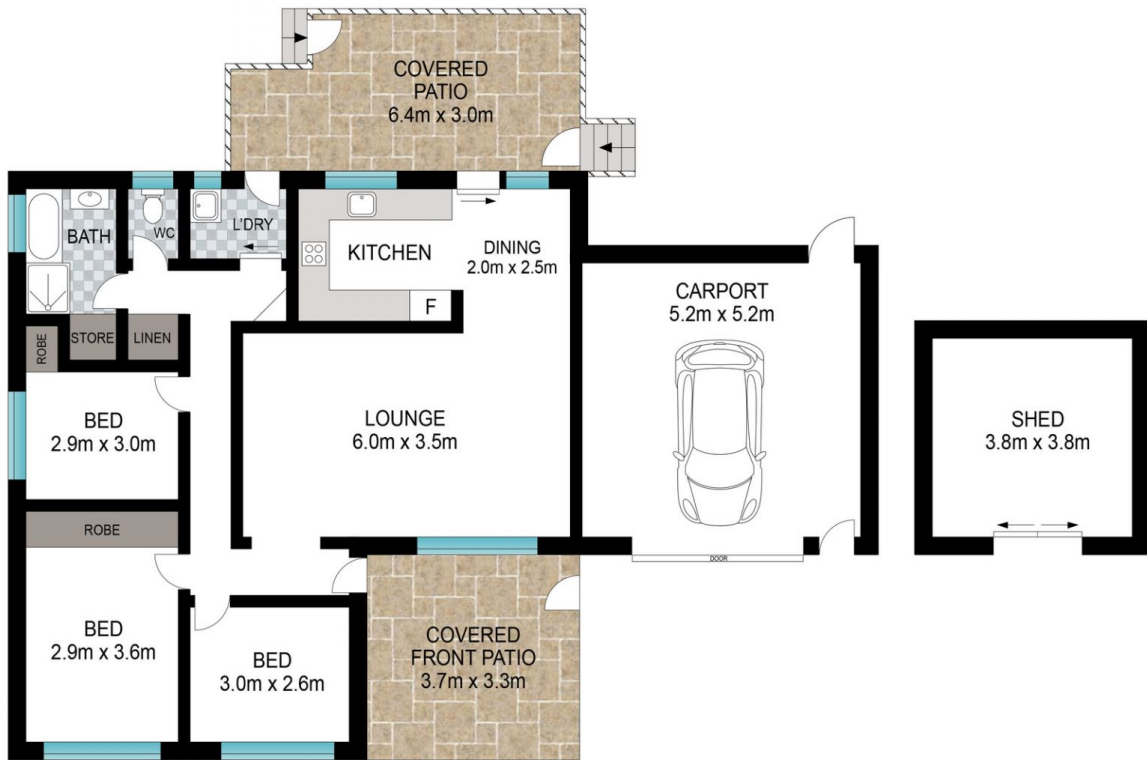
[For full version visit the website](https://www.aletacorealty.com)



Natalie Scott
02 6638 9311



Charlotte Gray
(02) 6638 9311



INT: 125 m²
EXT: 30 m²



Scale in metres. Indicative only. Dimensions are approximate. All information contained herein is gathered from sources we believe to be reliable. However, we cannot guarantee its accuracy and interested persons should rely on their own enquiries.

54 Bower Crescent, Toormina

