



## 200 Dress Circle Coffs Harbour NSW

3  3  2 

After a home that is in as new condition, that has views that most would envy?than look no further than this well designed home that provides everyone with their own space and a choice of areas to relax and enjoy with minimal maintenance!

On the entrance level through a beautiful blackbutt timber door is a foyer area that has internal access off the remote double garage, bedroom two is on this level, it is queen size and has an ensuite. Down a few stairs and boom there it is stunning views of Muttonbird Island, the city lights, panoramic ocean and mountain escarpment. Open plan this area features a galley style kitchen with modern necessities, dining area, lounge room and through closed doors is a further enclosed verandah that makes for a

**Type** : Semi Detached  
**Price** : \$ 920,000  
**Land Size** : 463 sqm  
**View** : <https://www.aletacorealty.com/sale/nsw/mid-north-coast/coffs-harbour/residential/semi-detached/7902328>

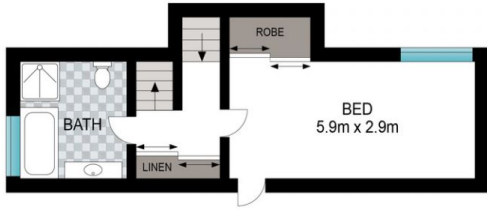


**Aleta Stephens**  
 (02) 6638 9311

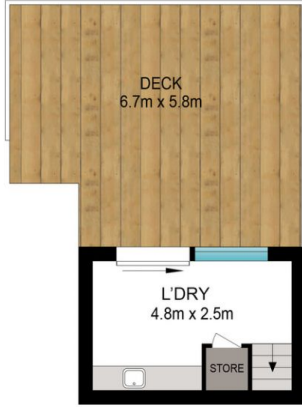


**Whitney Stephens**  
 (02) 6638 9311

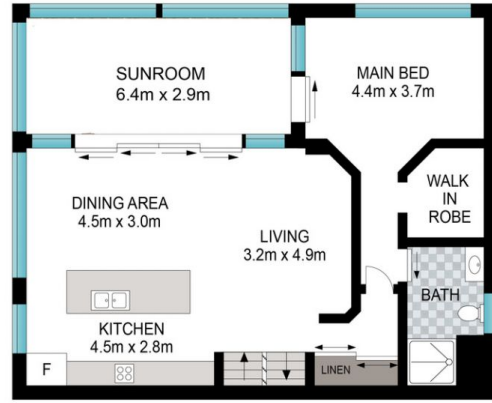
[For full version visit the website](https://www.aletacorealty.com)



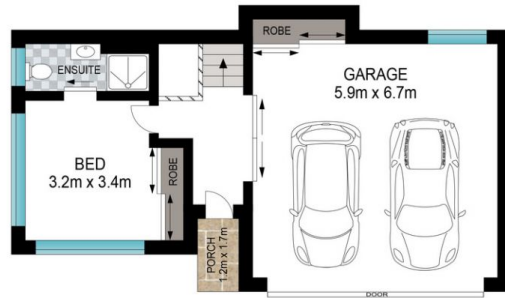
FLOOR 2



FLOOR 1



FLOOR 3



FLOOR 4



Scale in metres. Indicative only. Dimensions are approximate. All information contained herein is gathered from sources we believe to be reliable. However, we cannot guarantee its accuracy and interested persons should rely on their own enquiries.

INT: 151 m<sup>2</sup>  
EXT: 57 m<sup>2</sup>

200 Dress Circle, Coffs Harbour

