



22 Reid Drive Coffs Harbour NSW

4  3  2 

This executive family home is one not to be missed, located in an area of Coffs Harbour that is sought after and tightly held due to its proximity to the local Golf Club, popular schooling, Coffs Base Hospital and the central business district.

With a commanding street presence this home will be very appealing to those wanting a fabulous family home with a floor plan to cater for the largest of families. From the grand entrance area, through to the formal lounge area that is light filled and enjoys a north aspect, through to the modern galley style kitchen that will please the fussiest of cooks with the amount of bench space, storage and quality fixtures.

Type : House
Price : \$ 1,110,000
Land Size : 827 sqm
View : <https://www.aletacorealty.com/sale/nsw/mid-north-coast/coffs-harbour/residential/house/7837712>

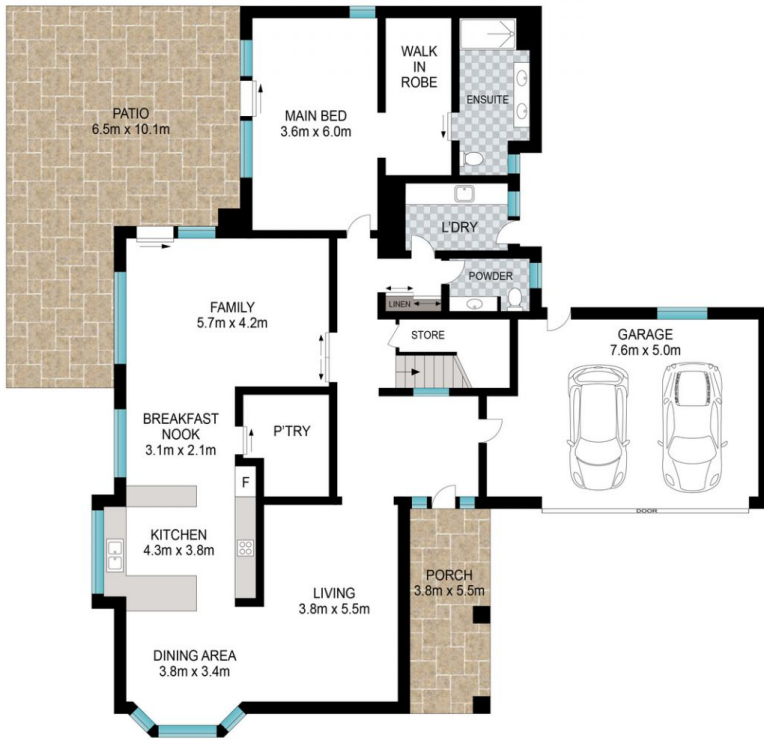


Aleta Stephens
 (02) 6638 9311

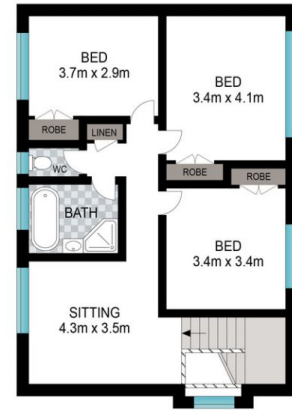


Whitney Stephens
 (02) 6638 9311

[For full version visit the website](https://www.aletacorealty.com)



GROUND FLOOR



FIRST FLOOR



Scale in metres. Indicative only. Dimensions are approximate. All information contained herein is gathered from sources we believe to be reliable. However, we cannot guarantee its accuracy and interested persons should rely on their own enquiries.

INT: 242 m²
EXT: 64 m²

22 Reid Drive, Coffs Harbour

