



**1/12 Sunbird Crescent Boambee East NSW**

2  1  1 

This villa is a fabulous size and is sun-drenched in the warmth of the winter sun, from the moment you walk in it feels like home. A large lounge area overlooks the level front yard, this area could be fenced in to provide room for a caravan, boat or just plenty of room for the kids to play.

The kitchen is original and galley style but immaculate and is air conditioned. There are two good sized bedrooms with built-ins and ceiling fans with the single garage having carpet and being perfect for a second living/3rd bedroom or home office with car accommodation by way of a single carport.

The bathroom and separate toilet are two way providing for convenient access. The laundry is full sized and opens out

[For full version visit the website](https://www.aletacorealty.com/sale/nsw/mid-north-coast/boambee-east/residential/villa/7643629)

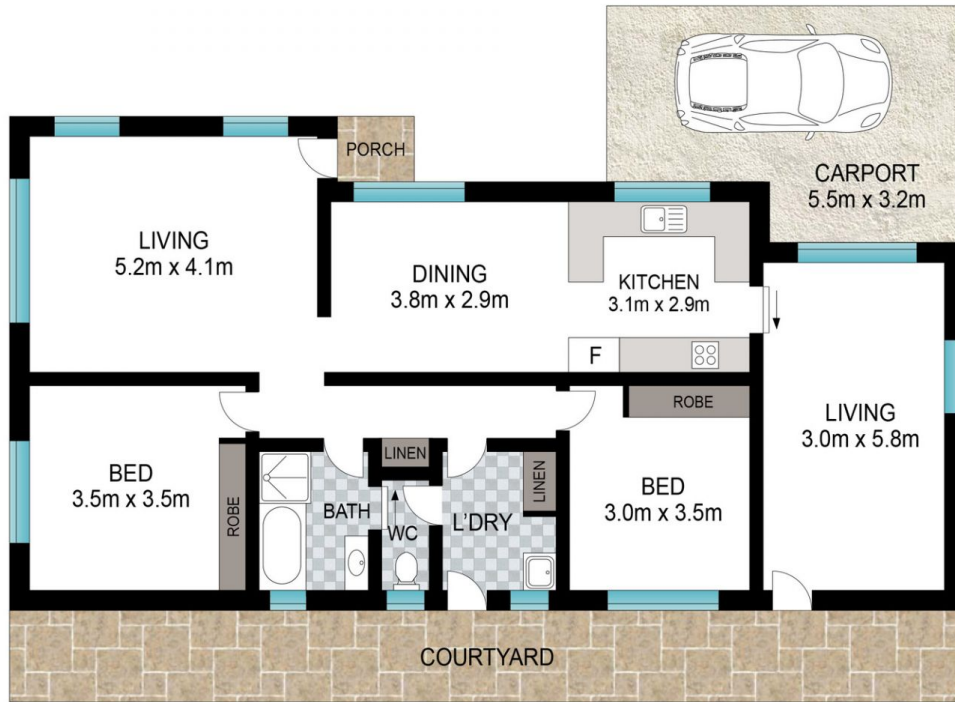
**Type** : Villa  
**Price** : \$ 585,000  
**Land Size** : 142 sqm  
**View** : <https://www.aletacorealty.com/sale/nsw/mid-north-coast/boambee-east/residential/villa/7643629>



**Aleta Stephens**  
(02) 6638 9311



**Whitney Stephens**  
(02) 6638 9311



INT: 106 m<sup>2</sup>  
EXT: 25 m<sup>2</sup>

Scale in metres. Indicative only. Dimensions are approximate. All information contained herein is gathered from sources we believe to be reliable. However, we cannot guarantee its accuracy and interested persons should rely on their own enquiries.

1/12 Sunbird Crescent, Boambee East

