



48 William Sharp Drive Coffs Harbour NSW

4  2  2 

This lovely four-bedroom family home has wonderful architectural features throughout, from soaring cathedral ceilings, split-level design with and hardwood flooring. With the property bordering a reserve that provides a fabulous treed outlook out to the mountains and only a short walk down to the children's playground that includes a dog park.

Built only two years ago by a local builder, this home will be sure to impress. All bedrooms are a great size, and the master has an ensuite and walk-in-robe that has been fitted out with timber cabinetry for that luxurious feel.

The kitchen is galley style with a wonderful easterly aspect, and views also out to the reserve, and to the large decking area. When entertaining guests, you will enjoy the

[For full version visit the website](https://www.aletacorealty.com/sale/nsw/mid-north-coast/coffs-harbour/residential/house/7625840)

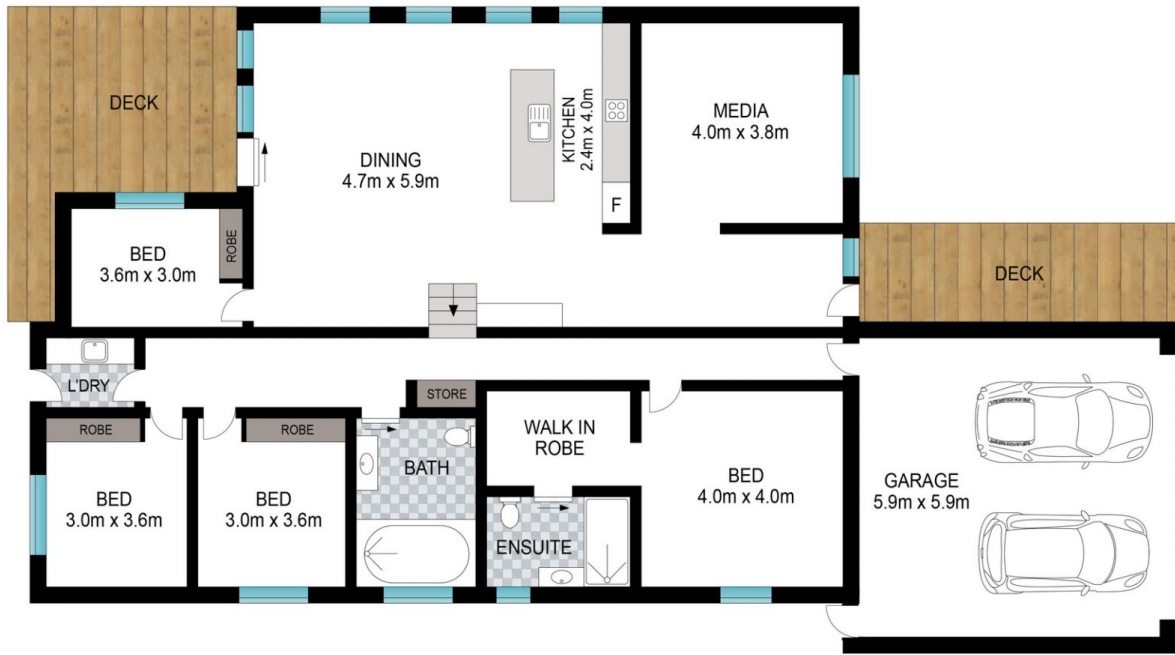
Type : House
Price : \$ 935,000
Land Size : 665 sqm
View : <https://www.aletacorealty.com/sale/nsw/mid-north-coast/coffs-harbour/residential/house/7625840>



Aleta Stephens
 (02) 6638 9311



Whitney Stephens
 (02) 6638 9311



INT: 220 m²
EXT: 30 m²

Scale in metres. Indicative only. Dimensions are approximate. All information contained herein is gathered from sources we believe to be reliable. However, we cannot guarantee its accuracy and interested persons should rely on their own enquiries.

48 William Sharp Drive, Coffs Harbour

