






9 Beryl Street Coffs Harbour NSW

4  2  1 

Large corner parcel of land with great family home just a short hop, skip and jump away from Coffs CBD and all that it has to offer. Walk to cafes, club, restaurants, major shopping and the Sunday markets.....live an easy, relaxed and enjoyable lifestyle here.

The home has had some improvements throughout including stone bench tops, timber look flooring/carpet and a bathroom renovation a few years back. It is flooded in natural light having a North/east aspect throughout the main living, kitchen and dining areas and would enjoy both the sunshine and easterly breezes all year round.

Complete with air conditioning, single remote garage, loads of storage and an extra shower and toilet in the laundry.

[For full version visit the website](https://www.aletacorealty.com)

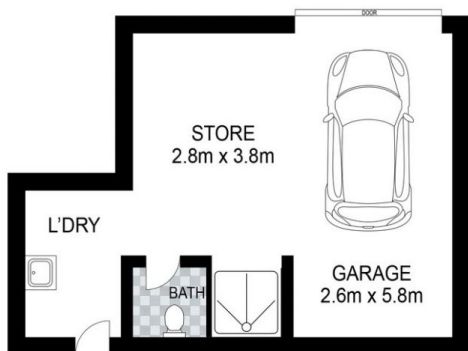
Type : House
Price : \$ 740,000
Land Size : 860 sqm
View : <https://www.aletacorealty.com/sale/nsw/mid-north-coast/coffs-harbour/residential/house/7576567>



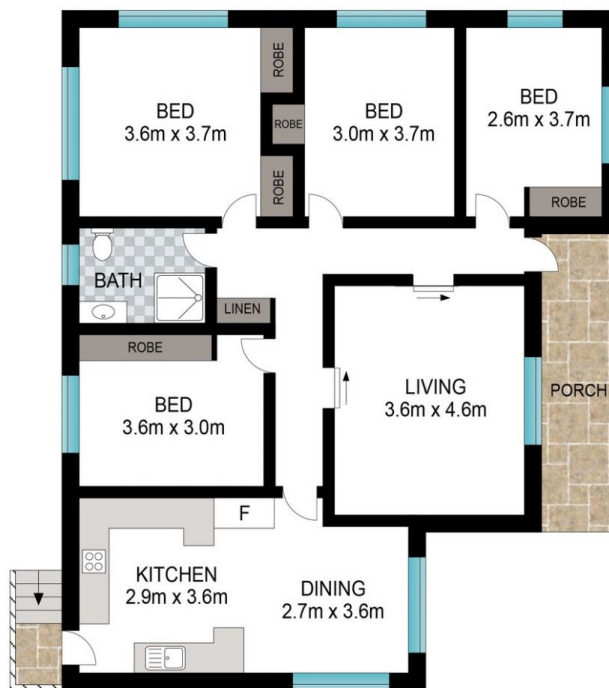
Aleta Stephens
 (02) 6638 9311



Whitney Stephens
 (02) 6638 9311



LOWER LEVEL



UPPER LEVEL



INT: 110 m²
EXT: 10 m²

Scale in metres. Indicative only. Dimensions are approximate. All information contained herein is gathered from sources we believe to be reliable. However, we cannot guarantee its accuracy and interested persons should rely on their own enquiries.