



12/210 Pacific Highway North Boambee Valley NSW

2  1  1 

Want the idyllic lifestyle of resort style living, if you are downsizing than this lovely home in the Lime Tree Village will be the perfect option. Neat and tidy and with two bedrooms and light filled living areas to enjoy, or perhaps entertain your guests by the in ground pool in this gated complex. The home offers air conditioning and car accommodation is by way of a single carport.

There is a community hall with plenty of activities held weekly and an opportunity to meet new friends. Each home is separately metered for water and electricity and there are no council rates?want more there is also NO stamp duty payable upon purchase.

The complex is pet friendly and you will enjoy taking your

[For full version visit the website](https://www.aletacorealty.com)

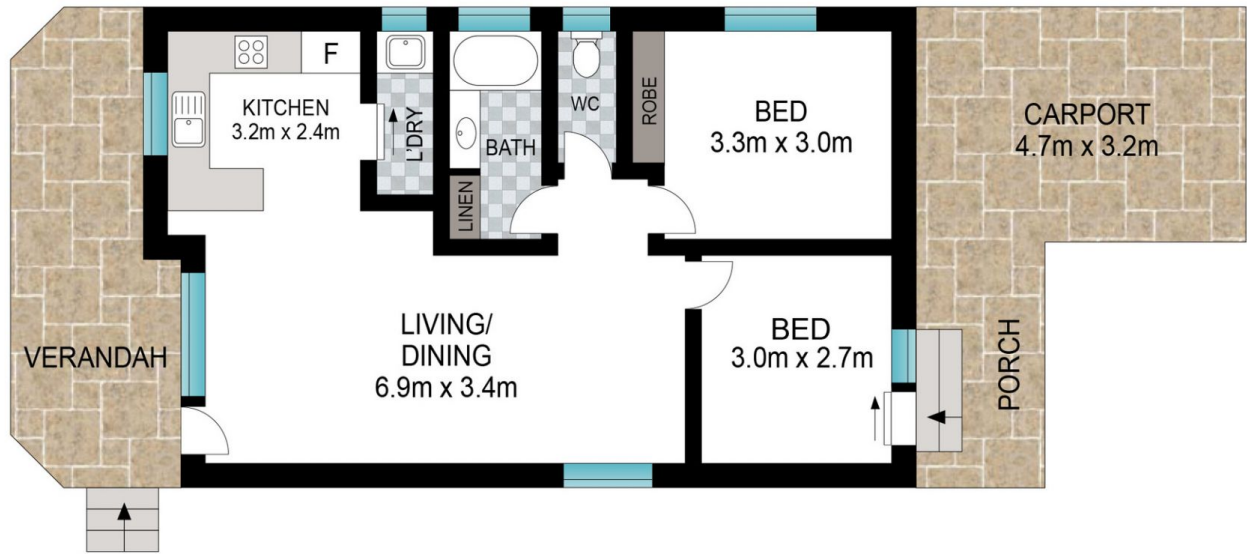
Type : House
Price : \$ 245,000
Building Size : 60 sqm
Land Size : 90 sqm
View : <https://www.aletacorealty.com/sale/nsw/mid-north-coast/north-boambee-valley/residential/house/7408068>



Aleta Stephens
 (02) 6628 0314



Whitney Stephens
 (02) 6628 0314



INT: 60 m²
EXT: 30 m²

Scale in metres. Indicative only. Dimensions are approximate. All information contained herein is gathered from sources we believe to be reliable. However, we cannot guarantee its accuracy and interested persons should rely on their own enquiries.

12/210 Pacific Highway, Coffs Harbour

