



4 Coorabin Crescent Toormina NSW

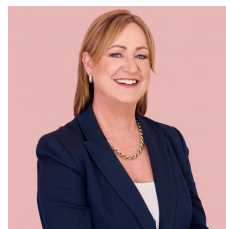
4  1  1 

This home has a lovely feel from the moment you walk in, it has a light filled open plan floor design and will accommodate a large family. Built on a large level 829m2 allotment with plenty of room subject to council approval to build a granny flat or second dwelling. Recently updated with fresh paint and new timber look flooring throughout the living areas and new carpet to the bedrooms.

This is a good solid home with a versatile floor plan with four bedrooms and a north facing kitchen that overlooks the large backyard perfect for watching the kids play. All bedrooms have built-in robes or storage, ceiling fans and the current single garage has been converted to bed four and an office but could easily be converted back. Or you could extend the single carport to accommodate further

Type : House
Price : \$ 685,000
Land Size : 897.9 sqm
View : <https://www.aletacorealty.com/sale/nsw/mid-north-coast/toormina/residential/house/7342259>

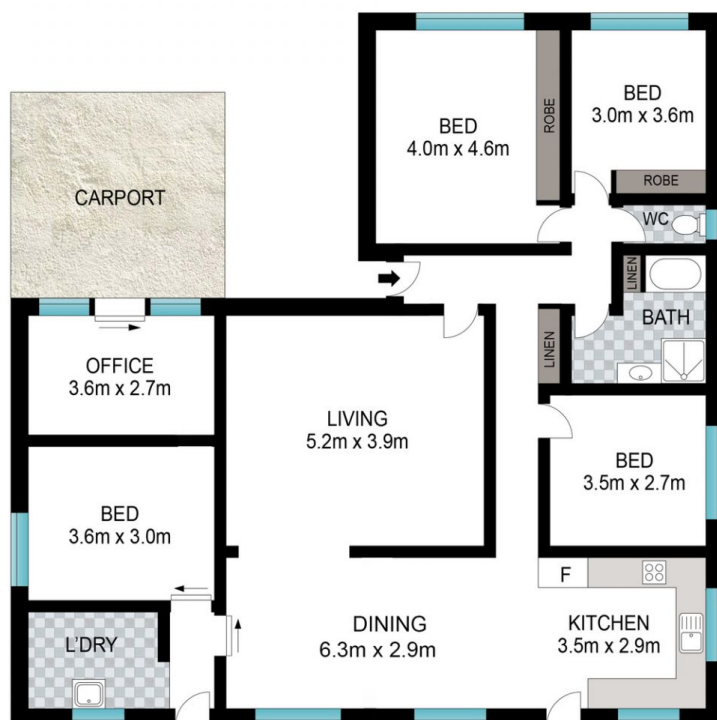
[For full version visit the website](https://www.aletacorealty.com)



Aleta Stephens
 (02) 6638 9311



Whitney Stephens
 (02) 6638 9311



Scale in metres. Indicative only. Dimensions are approximate. All information contained herein is gathered from sources we believe to be reliable. However, we cannot guarantee its accuracy and interested persons should rely on their own enquiries.

INT: 140 m²
EXT: 15 m²

4 Coorabin Crescent, Toormina

