

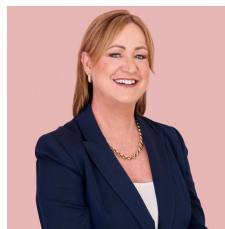
10/122-126 Park Beach Road Coffs Harbour NSW

3  **2**  **1** 

Abode was built in 2015 by well-known local builders who have been well regarded within the building industry for their quality workmanship. This townhouse is modern and spacious, with extensive use of glass allowing the northern sun to shine in, creating a wonderful light filled home to enjoy. A short distance from the beach, hotel, bowling club and an array of cafés and restaurants?when location and living your best life matters it starts here!

Architecturally appealing this property offers quality finishes, the galley style kitchen has stone benches, good storage and Bosch appliances. The kitchen, dining and living are open plan and overlook the great outdoor alfresco area and its pretty gardens.

Type : Townhouse
Price : \$ 815,000
Land Size : 173 sqm
View : <https://www.aletacorealty.com/sale/nsw/mid-north-coast/coffs-harbour/residential/townhouse/7262533>

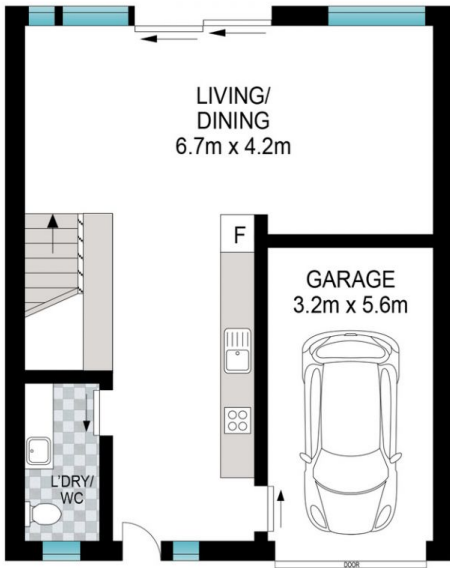


Aleta Stephens
(02) 6638 9311

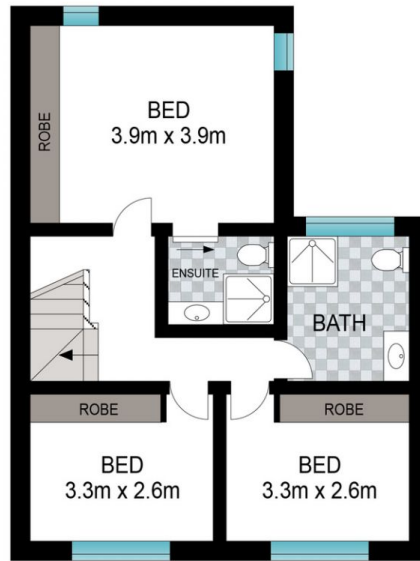


Whitney Stephens
(02) 6638 9311

[For full version visit the website](https://www.aletacorealty.com)



LOWER LEVEL



UPPER LEVEL



Scale in metres. Indicative only. Dimensions are approximate. All information contained herein is gathered from sources we believe to be reliable. However, we cannot guarantee its accuracy and interested persons should rely on their own enquiries.

INT: 115 m²

10/122-126 Park Beach Road, Coffs Harbour

