



295 Sawtell Road Boambee East NSW

3  1  1 

Our owner is currently overseas enjoying an adventure abroad but wanted to return from their overseas trip in twelve months and raise their young family here but due to unforeseen circumstances they have to now sell their lovely recently renovated home.

Located a stone's throw from Cordwells Creek will allow you to walk down or even wheel the tinny down for a spot of fishing or jump in the car and a short drive will place you at the IGA convenience complex that includes shopping, chemist, bakery or bottle shop.

Set well back off the main road and private this home feels like your on a bigger allotment than the 480.8m2 parcel. The home is finished in a blackwood timber and has a

Type : House
Price : \$ 650,000
Land Size : 480.8 sqm
View : <https://www.aletacorealty.com/sale/nsw/mid-north-coast/boambee-east/residential/house/7228738>

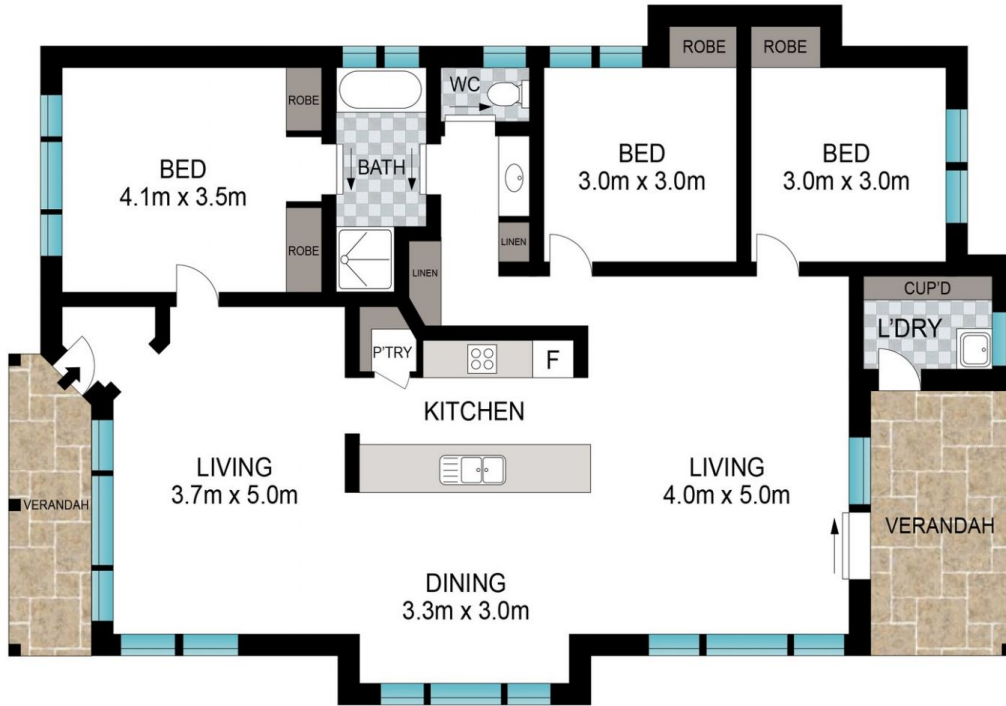


Aleta Stephens
 (02) 6638 9311



Whitney Stephens
 (02) 6638 9311

[For full version visit the website](https://www.aletacorealty.com)



INT: 123 m²
EXT: 14 m²

Scale in metres. Indicative only. Dimensions are approximate. All information contained herein is gathered from sources we believe to be reliable. However, we cannot guarantee its accuracy and interested persons should rely on their own enquiries.