



9 Beryl Street Coffs Harbour NSW

4 🚗 2 🚗 1 🚗

Large family home positioned in the immediate CBD, walk to absolutely everything....cafes, club, restaurants, major shopping centre, markets, the list is endless.

From the moment you enter you will be impressed with how well kept this solid family home has been. Featuring high ceilings with ornate cornices, the original cool shaped kitchen with upgraded stone benches - this area is East facing and light filled. The lounge is central with air-conditioning and each of the bedrooms is of a good size and there are built-in robes.

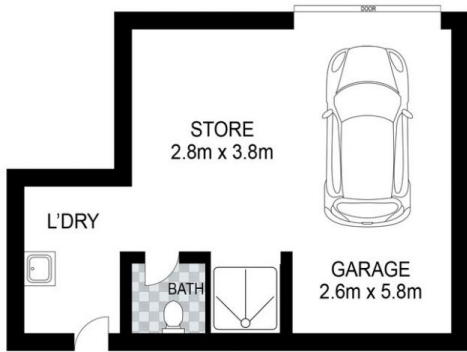
Complete with single garage, loads of storage and extra shower and toilet in the laundry. The home does have external shutters for all year round comfort and surrounded

[For full version visit the website](https://www.aletacorealty.com/lease/nsw/mid-north-coast/coffs-harbour/residential/house/7222433)

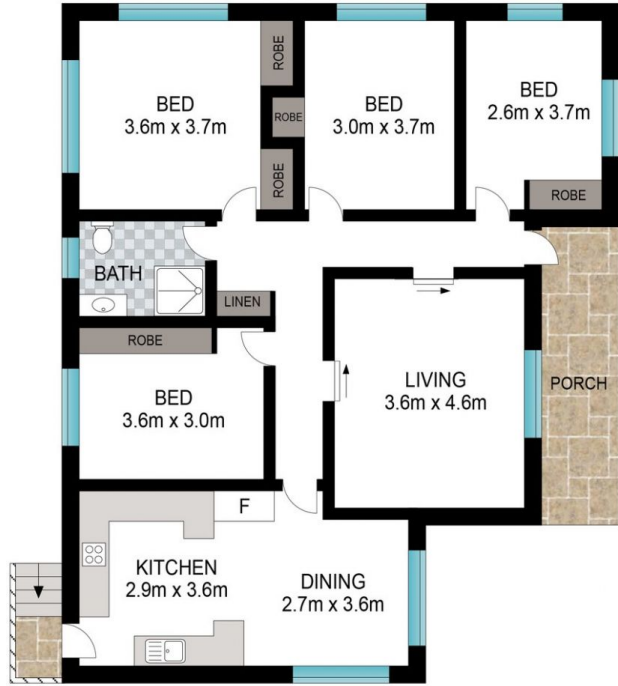
Type : House
Land Size : 860 sqm
View : <https://www.aletacorealty.com/lease/nsw/mid-north-coast/coffs-harbour/residential/house/7222433>



Natalie Scott
02 6638 9311



LOWER LEVEL



UPPER LEVEL



INT: 110 m²
EXT: 10 m²

Scale in metres. Indicative only. Dimensions are approximate. All information contained herein is gathered from sources we believe to be reliable. However, we cannot guarantee its accuracy and interested persons should rely on their own enquiries.