



## 2/11 Prince Street Coffs Harbour NSW

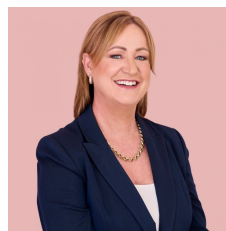
2  1 

Whether you're looking to downsize and enjoy a lifestyle in a location that most would envy or starting out and seeking your first home or an investor that wants an investment close to all that the Coffs Coast has to offer than it's time to start packing those boxes and preparing for your next move.

This single level unit is close to the Park Beach Plaza, Park Beach Bowling Club, Cafes, and entertainment plus bus stop not too far away?if convenience is what you are looking for then this unit close to the beach will not disappoint.

The easy floor plan has two well-proportioned bedrooms both with built-ins, a light filled living/dining area that is tiled

**Type** : Unit  
**Price** : \$ 349,500  
**View** : <https://www.aletacorealty.com/sale/nsw/mid-north-coast/coffs-harbour/residential/unit/7186092>

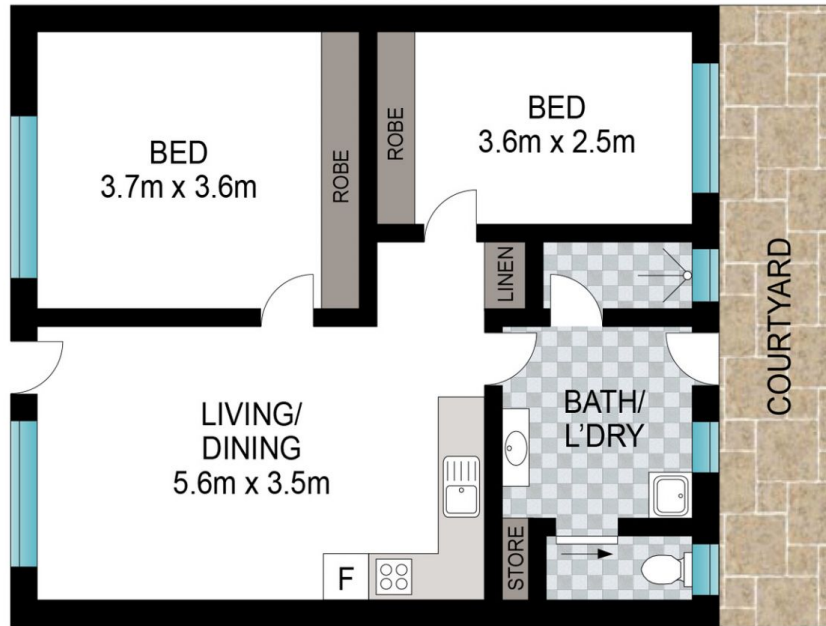


**Aleta Stephens**  
 (02) 6638 9311



**Whitney Stephens**  
 (02) 6638 9311

[For full version visit the website](https://www.aletacorealty.com)



INT: 60 m<sup>2</sup>  
EXT: 10 m<sup>2</sup>

Scale in metres. Indicative only. Dimensions are approximate. All information contained herein is gathered from sources we believe to be reliable. However, we cannot guarantee its accuracy and interested persons should rely on their own enquiries.

2/11 Prince Street, Coffs Harbour

