



### 45 Pearce Drive Coffs Harbour NSW

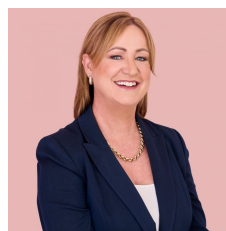
3  1  2 

Perched up on the hill with glorious 180-degree views of the mountain vista is this lovely three-bedroom family home that has a real warmth about it. When you arrive at this address you are greeted with a tree lined driveway that leads up to the home, it has room at the front for a tinny or camper along with remote double garage that has drive thru access for the extra toys! It has stunning timber flooring throughout the home and after having the same tenant for over 15 years that have lovingly cared for it as there own means moving straight in and enjoying an easy option.

The home consists of a living area with air-conditioning and sliding doors to the backyard, the lovely breezes would flow through here and allow a view to the backyard to watch the

[For full version visit the website](https://www.aletacorealty.com/sale/nsw/mid-north-coast/coffs-harbour/residential/house/7185927)

**Type** : House  
**Price** : \$ 730,000  
**Land Size** : 703.3 sqm  
**View** : <https://www.aletacorealty.com/sale/nsw/mid-north-coast/coffs-harbour/residential/house/7185927>



**Aleta Stephens**  
 (02) 6638 9311



**Whitney Stephens**  
 (02) 6638 9311